

# Anti-H\_FOLH1(PSMA) hIgG1 Antibody(Rosopatamab)

## Product information

GM-27353AB-10	10 µg
GM-27353AB-100	100 µg
GM-27353AB-1000	1 mg

## Antibody Information

Species Reactivity	Human; Cynomolgus;
Clone	Rosopatamab
Source/Isotype	Monoclonal human IgG1, κ
Application	Flow cytometry;
Other Names	PSM; FGCP; FOLH; GCP2; mGCP; GCPII; NAALAD1
Gene ID	Q04609-1 (human); A0A2K5VNZ0-1 (Cynomolgus)
Storage	Store at 2-8°C short term (1-2 weeks).Store at ≤ -20°C long term. Avoid repeated freeze-thaw.
Formulation	Phosphate-buffered solution, pH 7.2.
Endotoxin	< 1 EU/mg, determined by LAL gel clotting assay

## Data Examples

Flow cytometry H\_FOLH1(PSMA) HEK-293 Cell Line (Catalog # GM-C26312) was stained with Anti-H\_FOLH1(PSMA) hIgG1 Antibody(Rosopatamab) or isotype control antibody.

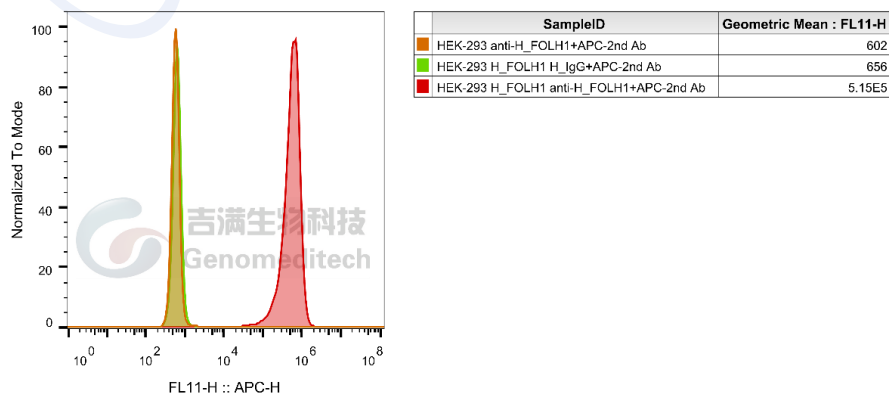
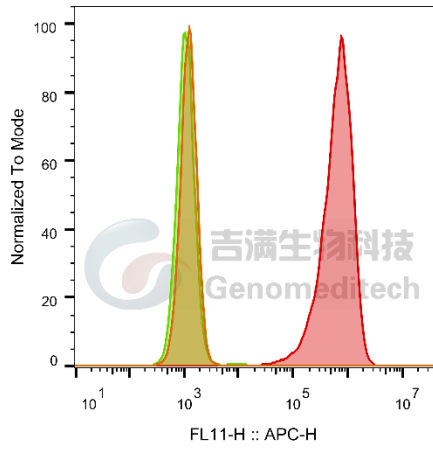


Fig. FACS

Version:0.3.2.240521

Flow cytometry

Cynomolgus\_FOLH1(PSMA) CHO-K1 Cell Line (Catalog # GM-C26313)  
 was stained with Anti-H\_FOLH1(PSMA) hIgG1 Antibody(Rosopatamab) or  
 isotype control antibody.



SampleID	Geometric Mean : FL11-H
CHO-K1 Cyno_FOLH1+APC-2nd Ab	1241
CHO-K1 Cyno_FOLH1 H_IgG+APC-2nd Ab	1113
CHO-K1 Cyno_FOLH1 anti-H_FOLH1+APC-2nd Ab	6.14E5

Fig. FACS

Genomeditech